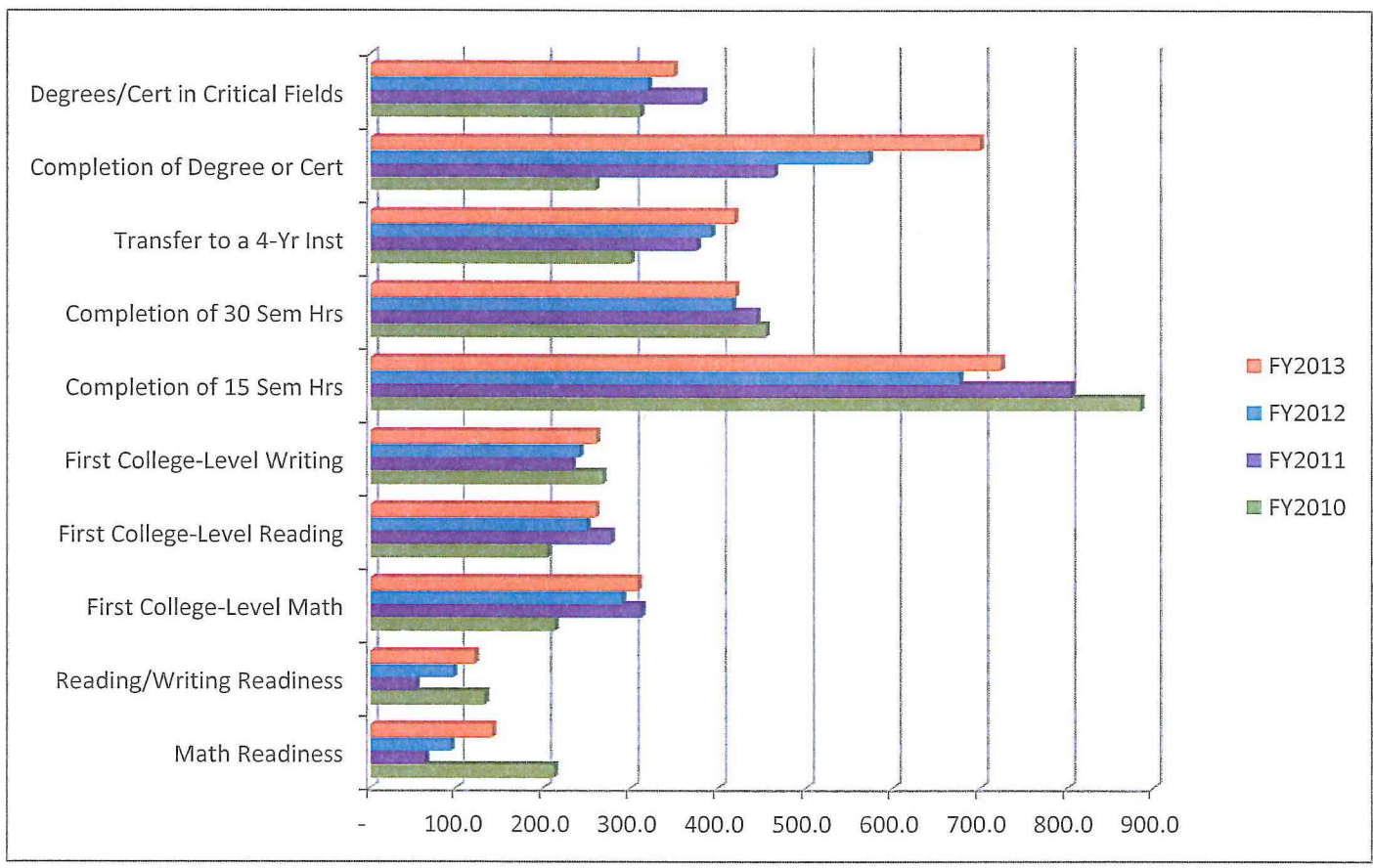


GALVESTON COLLEGE STUDENT SUCCESS POINTS

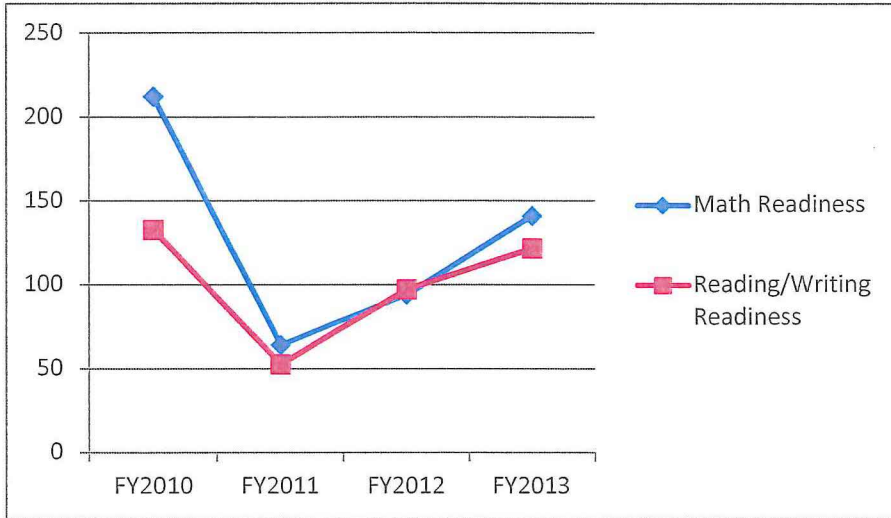
Student Success Points	FY2010	FY2011	FY2012	FY2013
Math Readiness	212.0	64.0	94.0	141.0
Reading/Writing Readiness	132.5	52.5	97.0	121.5
First College-Level Math	213.0	312.0	290.0	308.0
First College-Level Reading	204.5	277.0	249.5	260.0
First College-Level Writing	268.0	232.5	241.0	260.5
Completion of 15 Sem Hrs	885.0	804.0	676.0	723.0
Completion of 30 Sem Hrs	454.0	443.0	415.0	419.0
Transfer to a 4-Yr Inst	300.0	376.0	392.0	418.0
Completion of Degree or Cert	260.0	464.0	572.0	700.0
Degrees/Cert in Critical Fields	311.0	382.5	319.5	348.8
TOTAL Success Points	3,240.0	3,407.5	3,346.0	3,699.8



Source: President's Office - GC Board of Regents Retreat/Meeting Report; Agenda Item VII; June 25, 2014

GALVESTON COLLEGE STUDENT SUCCESS POINTS THECB DATA

	FY2010	FY2011	FY2012	FY2013
Math Readiness	212	64	94	141
Reading/Writing Readiness	132.5	52.5	97	121.5

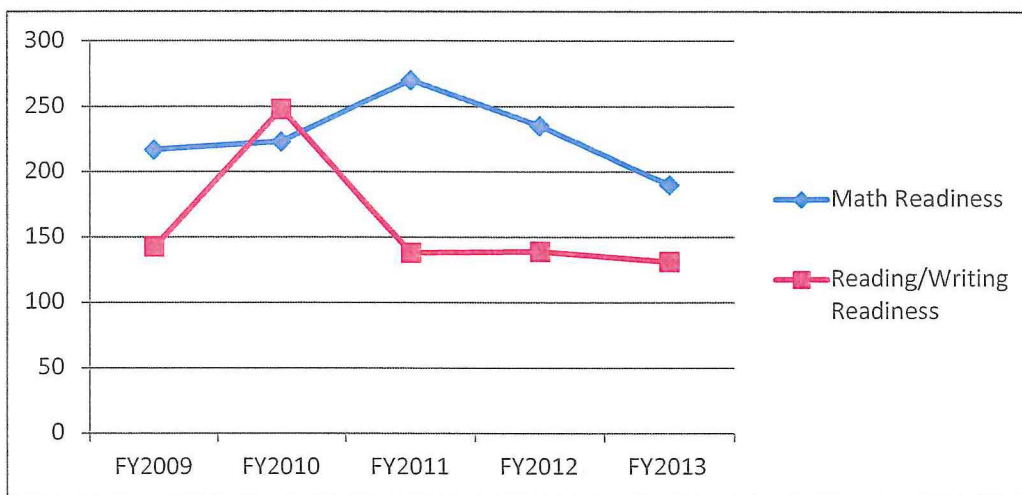


STUDENTS WHO COMPLETED TSI BY END OF SEMESTER AT GC (PER CBM002)

SEMESTER	MATH	READ	WRITE	MATH	READ	WRITE
Fall 2013	81	41	44			
Summer II 2013	26	2	2			
Summer I 2013	14	12	1			
Spring 2013	66	53	47			
Fall 2012	84	82	63			
	190	149	113			
Summer II 2012	31	8	13	31	8	13
Summer I 2012	1	20	11	1	20	11
Spring 2012	104	65	51	104	65	51
Fall 2011	26	68	35	99	74	36
	162	161	110	235	167	111
Summer II 2011	0	1	0	8	7	7
Summer I 2011	0	0	0	25	24	12
Spring 2011	9	9	10	121	66	48
Fall 2010	9	10	12	116	64	48
	18	20	22	270	161	115
Summer II 2010	1	0	0	7	12	6
Summer I 2010	0	1	0	27	18	18
Spring 2010	75	100	87	75	100	87
Fall 2009	114	146	109	114	146	109
	190	247	196	223	276	220

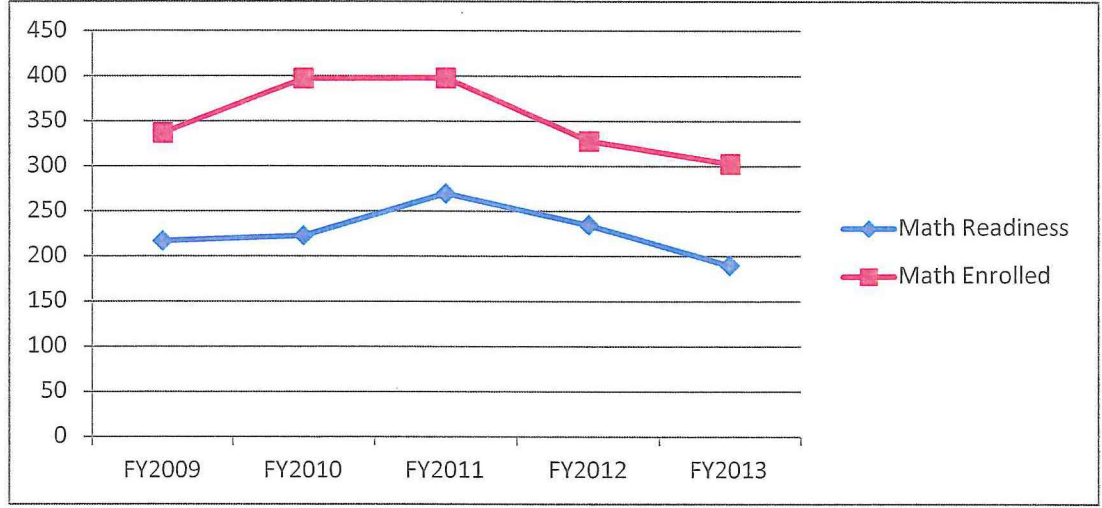
GALVESTON COLLEGE STUDENT SUCCESS POINTS

	FY2009	FY2010	FY2011	FY2012	FY2013
Math Readiness	217	223	270	235	190
Reading/Writing Readiness	142.5	248	138	139	131

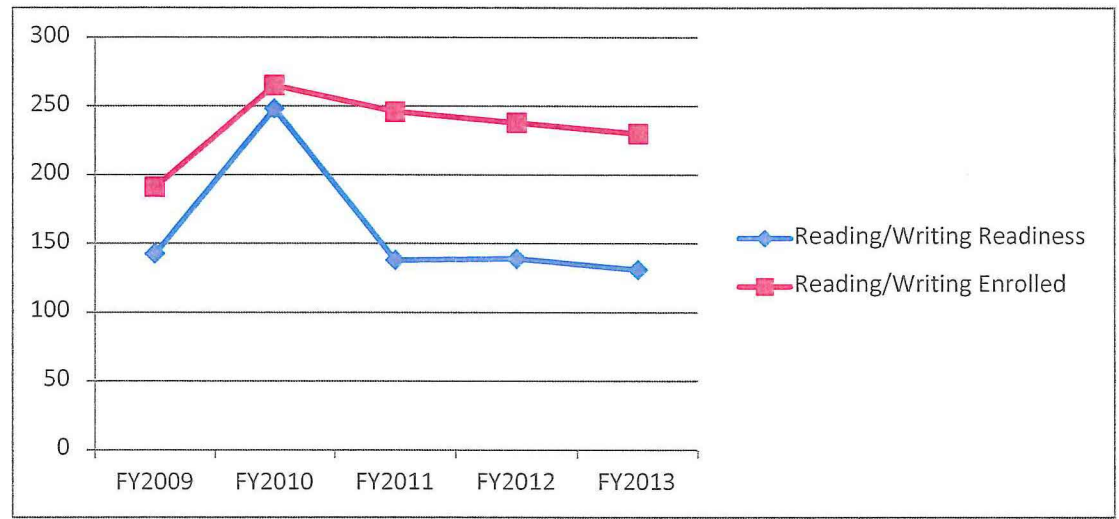


GALVESTON COLLEGE STUDENT SUCCESS POINTS

	FY2009	FY2010	FY2011	FY2012	FY2013
Math Readiness	217	223	270	235	190
Math Enrolled	337	397	398	328	303
	64%	56%	68%	72%	63%



	FY2009	FY2010	FY2011	FY2012	FY2013
Reading/Writing Readiness	142.5	248	138	139	131
Reading/Writing Enrolled	191	265	246	238	230
	75%	94%	56%	58%	57%



Source: President's Office - GC Board of Regents Retreat/Meeting Report; Agenda Item VII; June 25, 2014