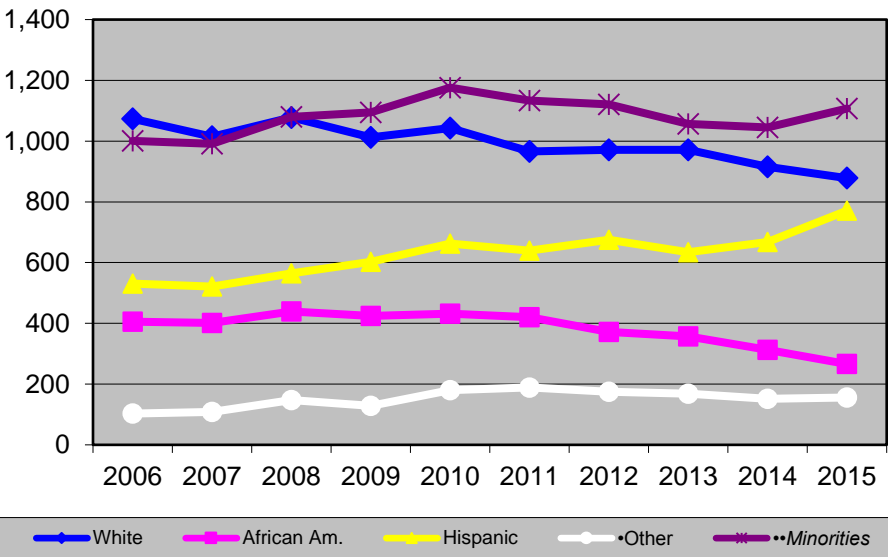


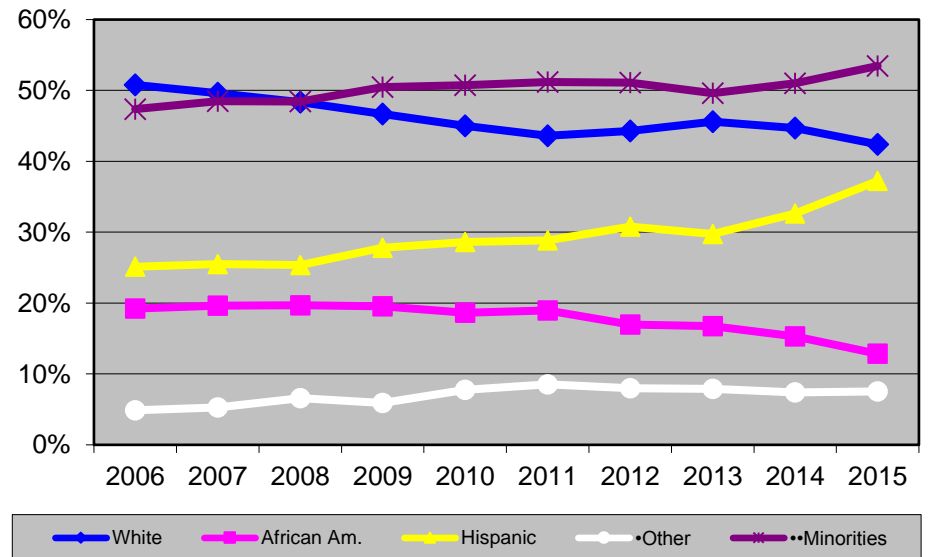
Fall Headcount by ETHNICITY/RACE* 2006 to 2015

ETHNICITY/RACE *	ENROLLMENT (#)										PERCENT (%)									
	2006	2007	2008	2009	2010	2011	2012	2013	2014	2015	2006	2007	2008	2009	2010	2011	2012	2013	2014	2015
White	1,073	1,014	1,078	1,012	1,043	966	971	971	915	878	51%	50%	48%	47%	45%	44%	44%	46%	45%	42%
African American	406	401	439	424	432	420	372	357	313	266	19%	20%	20%	20%	19%	19%	17%	17%	15%	13%
Hispanic	531	521	565	603	663	639	675	634	668	771	25%	25%	25%	28%	29%	29%	31%	30%	33%	37%
Asian/Nat Haw/Pac Islr	54	65	65	59	64	62	67	59	56	60	3%	3%	3%	3%	3%	3%	3%	3%	3%	3%
Native American	10	4	11	8	17	12	7	7	8	10	0.5%	0.2%	0.5%	0.4%	0.7%	0.5%	0.3%	0.3%	0.4%	0.5%
International	39	32	35	19	0	4	11	14	18	25	2%	2%	2%	1%	0.0%	0.2%	0.5%	0.7%	0.9%	1%
Multi-racial	N/A	N/A	N/A	N/A	1	7	9	7	12	8	N/A	N/A	N/A	N/A	N/A	0.32%	0.4%	0.3%	0.6%	0.4%
Unknown	0	7	36	42	98	104	81	81	58	53	0.00%	0.3%	1.6%	2%	4%	5%	4%	4%	3%	3%
TOTAL	2,113	2,044	2,229	2,167	2,318	2,214	2,193	2,130	2,048	2,071	100%	100%	100%	100%	100%	100%	100%	100%	100%	100%

Fall Headcount by Ethnicity (#)



Fall Headcount by Ethnicity (%)



Source:
THECB -- CBM001 reports

•Other = Asian, Native Am/Alaskan Nat, International, Unknown, Nat Haw/Pac Islr, Multi-racial
 ••Minorities = African Am, Hispanic, Asian, Native Am, Nat Haw/Pac Islr

* Ethnicity/Race revised by THECB in Fall 2010.
Note: Figures do not include flex entry.