

CAMPUS SAFETY RESOURCES



BE AWARE. STAY SAFE.



Stay informed.

Galveston College is committed to providing you a safe environment in which to learn, study and work. And, as a member of this campus community, each of us has a personal responsibility to be prepared, to be informed and to have a plan in the event of an emergency situation. To this end, this sheet provides key campus safety resources for you to review.

Emergency Quick Guide

Please review the "IN CASE OF EMERGENCY" Quick Guide on the other side of this page, which details instructions for various emergency scenarios. Keep handy for quick reference.

Run. Hide. Fight. Surviving an Active Shooter Event

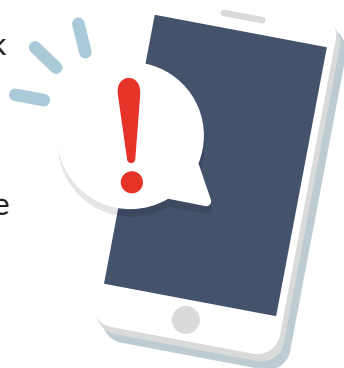
Active shooter training is available at Safe Colleges Training via this informational video. RUN. HIDE. FIGHT. Surviving an Active Shooter Event.

<https://www.youtube.com/watch?v=5VcSweju2D0>



Electronic Alerts

During high alert situations or when campus closures are a possibility, the website and Galveston College's social media channels such as Facebook and Twitter will display notifications, instructions and updates with the latest status information. You may also receive text alerts to your mobile phone.



GC.EDU

Campus Security and Safety

The Campus Security Department is responsible for security and emergency response at Galveston College. The Campus Police and dispatcher are located in the Mary Moody Northen building, within the Shipping and Receiving suite, N-105.

Security phones are monitored 24 hours a day. We welcome all questions, suggestions and reports of activities that do not appear to be safe or conducive to a positive learning experience.

Important Numbers



FIRE OR EMERGENCY

911

ON-CAMPUS SECURITY

409-944-1361

or dial X: 361 from a campus phone



**SEE SOMETHING
SAY SOMETHING**



For more information on Campus Security and Safety visit us online:

<https://gc.edu/about-gc/administration/campus-safety-security/index.php>

SAFE ESCORT

From dusk to dawn a campus officer can provide a safe escort from anywhere on campus to your vehicle.

CALL 409-944-1361

IN CASE OF EMERGENCY



FIRE

- Activate the nearest fire alarm
- Call 9-1-1, if possible, and then call Ext. 361 or 409-944-1361
- Knock on doors and yell "Fire" as you exit the building. Close doors as you leave.
- DO NOT USE THE ELEVATORS
- Evacuate and move away from the building

ACTIVE SHOOTER/ SUSPICIOUS PERSON/OBJECT

RUN (EVACUATE)

- Have an escape route and plan in mind
- Leave your belongings
- Keep your hands visible

HIDE (TAKE SHELTER)

- Hide in an area out of view
- Block entry to your area
- Silence your cell phone

FIGHT (TAKE ACTION AS LAST RESORT)

- Only when your life is in imminent danger:
- Attempt to incapacitate the person
- Use physical aggression; throw items at the person

BOMB THREAT/EXPLOSION

- If you receive a bomb threat, get as much information from the caller as possible
- Call Ext. 361 or 409-944-1361 immediately
- Do not touch or move any suspicious objects
- Clear the area. As you evacuate, look around for anything suspicious

HAZARDOUS MATERIALS

- If an emergency develops or anyone is in danger, call Ext. 361 or 409-944-1361 immediately
- Move away from the hazard to a safe location
- Follow the instructions of emergency personnel
- Alert others to stay clear of the area
- Notify emergency personnel if you have been exposed to or have information on the hazard

MEDICAL ALERT

- Call Ext. 361 or 409-944-1361
- Clear the area around victim
- Stay with the victim until medical help arrives, if possible

SEVERE WEATHER

- Watch for alerts via text, social and campus displays
- Monitor local TV or radio stations for emergency updates
- Check gc.edu for updates
- Stay away from windows, doors, and openings
- Move away from low-lying areas
- Evacuate immediately, if advised
- Do not return to affected areas until it is safe

POWER FAILURE

- Provide assistance to others, if necessary
- Move cautiously to a lighted area. Exits may be indicated by lighted signs
- Turn off lights and unplug electrical equipment
- Stay away from downed power lines and broken tree limbs
- If trapped in an elevator, activate the call button for emergency assistance
- For local outages, contact your campus Facilities Department or call Ext. 361 or 409-944-1361
- For information about a prolonged outage, check gc.edu or call Ext. 361 or 409-944-1361

CAMPUS WARNINGS

- Follow instructions and prepare to take action
- Monitor email and text messages for updates
- Check gc.edu for updates
- Keep your contact information current using **myGC** on the **Whitecaps Portal**

WHEN LAW ENFORCEMENT ARRIVES ON THE SCENE

- Remain calm and follow officer's instructions
- Put down any items in your hands
- Raise hands and spread fingers
- Keep hands visible at all times
- Avoid quick movements toward officers
- Avoid pointing, screaming or yelling

Information to provide:

- Location of incident, suspicious person, or object
- Number of people, if more than one
- Physical description of anyone involved
- Number and type of weapon used
- Number of potential victims at the location